

Fully CE Certified

AWARD WINNING IRISH JOINERY

Staircases | Windows | Front Doors & Gates | Bespoke Joinery



M McNALLY
J O I N E R Y **L T D**

W: www.mcnallyjoinery.ie
T: +353 1 8433022
E: info@mcnallyjoinery.ie

Visit our Showroom:
McNally Joinery Limited
Walshestown, Lusk, Co. Dublin



GEORGIAN FRONT DOOR

PROJECT: Front Entrance Overhaul, Dublin

MATERIALS: Iroko | Little Green Adventurer | Little Greene Shirting | Brass

FEATURES: Dual Colour | Fanlight | Corbels | Shelf Detail | Clear Toughened Double-Glazed Glass | Brass Heritage Multi-Point Lock



ARCHED DOORS & SIDE SCREENS

PROJECT: Grey Stained Glass Door

MATERIALS: Iroko | Glass | RAL 7016 Anthracite Grey | Stainless Steel | Chrome

FEATURES: Stained and Leaded Double Glazing | Stainless Steel Ball Bearing Hinges | Polished Chrome Lever Handles | Aluminium Threshold



DUAL COLOUR DOOR & SCREEN

PROJECT: High End House of Joinery, Blackrock

MATERIALS: Accoya | Glass | Black Grey | White

FEATURES: Accoya | Raised and Fielded Panels | Dual Colour | Sandblasted Glass with a Clear Border | Fab and Fix Handles

www.mcnallyjoinery.ie | 01-8433022 | info@mcnallyjoinery.ie



DUAL COLOUR DOOR & SCREEN

PROJECT: High End House of Joinery, Blackrock

MATERIALS: Accoya | Glass | White

FEATURES: Raised and Fielded Panels | Dual Colour | Sandblasted Glass with Clear Border | Stainless Steel Ball Bearing Hinges | Fab & Fix Handles



FRONT DOOR

PROJECT: Mint Turquoise Project

MATERIALS: Accoya | Glass | Mint Turquoise | Stainless Steel

FEATURES: TG&V Sheeting | Double Glazed Obscure Vision Panel | Stainless Steel T-Bar Handle | Aluminium Exitex Threshold

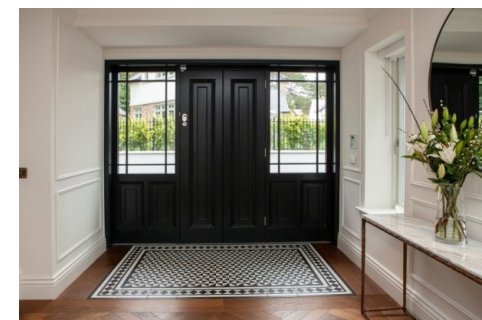


SLIDING GATE

PROJECT: Mint Turquoise Project

MATERIALS: Accoya | Mint Turquoise

FEATURES: TG&V Sheeted Gate



FRONT ENTRANCE

PROJECT: Malahide House Project

MATERIALS: Accoya | F&B 57 Off Black | Chrome | Clear Glass

FEATURES: Accoya Door | Stainless Steel Hinges | Polished Chrome Multi-Point Lock | Clear Toughened Double-Glazing

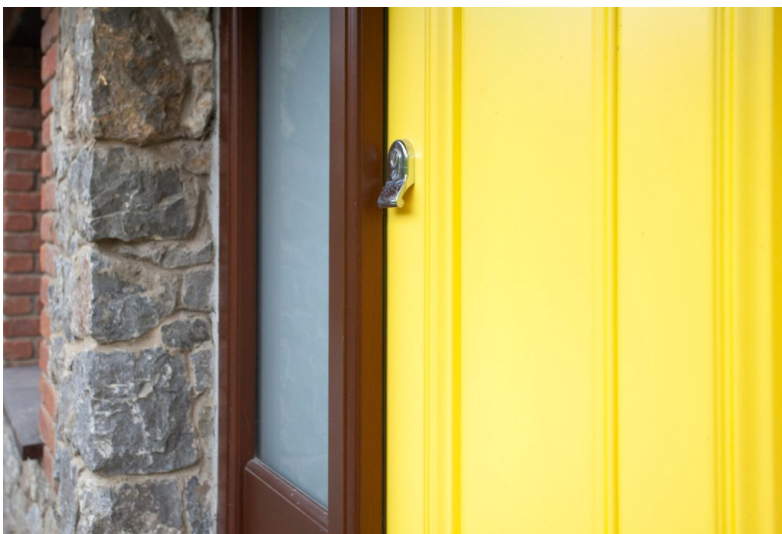


SHEETED GARAGE DOORS

PROJECT: Front Entrance Overhaul, Skerries

MATERIALS: Iroko | F&B Plummett No.272 | Stainless Steel

FEATURES: TG&V Sheeting | Polished Chrome Ring Pull | Satin Aluminium Exitex Threshold



ARCHED FRONT DOOR

PROJECT: Music School,
Full House of Joinery
Project

MATERIALS: Iroko |
McNally Cream | Stainless
steel | Satin chrome |
Satin obscure glass |
Teknos Rosewood

FEATURES: Dual Colour |
Multi-Point Lock



BACK DOOR & SCREEN

PROJECT: Music School,
Full House of Joinery
Project

MATERIALS: Iroko |
McNally Cream | Stainless
Steel | Satin Chrome |
Clear Glass | Teknos
Rosewood

FEATURES: Dual Colour



FRONT DOOR & SCREEN

PROJECT: Light Blue Door

MATERIALS: Iroko |
Stained Glass | F&B 82 Dix
Blue | RAL 9010 White
Stainless Steel

FEATURES: 57mm thick | 3
Flat Panels w' Bollection
Mold | Leaded Glass to
Door & Screen | Fanlight |
Dual Colour | Polished
Chrome Heritage Lock



SIDE ENTRANCE GATE

PROJECT: High End House of Joinery, Blackrock

MATERIALS: Iroko | F&B
26 Downpipe | Stainless Steel | Satin Chrome

FEATURES: TG&V Sheeting
| Stainless Steel Ball
Bearing Hinges | Satin
Chrome Handles

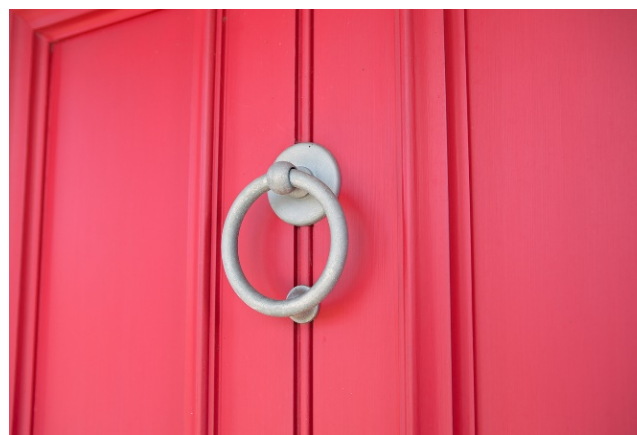


DOUBLE DOOR ENTRANCE SCREEN & FRONT DOOR

PROJECT: Front Entrance
Overhaul, Skerries

MATERIALS: Iroko | F&B
Plummett No. 272 | RAL
9010 White

FEATURES: Flat Panel Door
| 57mm Thick | Bollection
Mold | Obscure Glass with
Clear Border | Polished
Chrome Letterbox



DOOR, SCREEN & FANLIGHT

PROJECT: Ruby Red Door

MATERIALS: Iroko Teak | Sandblasted Glass | Ruby Red | Stainless Steel

FEATURES: 4 Panel Imitation Double Door | Double Side Screen | Arched Fanlight | Flat Panel Bollection Mold | Leaded Sandblasted Glass



SHEETED DOOR WITH FANLIGHT

PROJECT: Country House

MATERIALS: Iroko |
Double Glazing | Tea
Green Outside, RAL 9001
Cream to Frame & Inside

FEATURES: TG&V Sheeting
| 57mm Thick | Insulated
Panel | Dual Colour |
Heritage Lock | Fanlight



DOORS & FANLIGHT

PROJECT: Double doors with Arched Fanlight

MATERIALS: Iroko Teak |
Leaded Obscure Glass |
Teak Teknos

FEATURES: Arched
Fanlight | Leaded Glass |
TG&V Sheeted Panel |
Wrought Iron Style
Handles | Brass Ball
Bearing Hinges



FRONT DOOR & SCREEN

PROJECT: Deep Blue
Bespoke Door, Rush

MATERIALS: Iroko | RAL
5010 Blue | RAL 9010
White | 60% Sheen

FEATURES: 57mm Thick |
Raised and Fielded Panels
| Solid Glazing Bars |
Obscure Glass w' Clear
Border | Dual Colour |
Polished Chrome Lock



VINTAGE STYLE FRONT DOOR & SCREEN

PROJECT: House of
Joinery, Ballsbridge

MATERIALS: Iroko | Glass
| Anthracite Grey RAL
7016

FEATURES: Raised and
Fielded Panels | Heritage
Lock | Exitex Aluminium
Threshold | 57mm Thick
Door



**FRENCH DOORS, DOUBLE
SIDE SCREEN & FANLIGHT**

PROJECT: House of
Joinery, Ballsbridge

MATERIALS: Iroko | Glass
| Anthracite Grey RAL 7016

FEATURES: Duplex Glass
with plant on Glazing Bars
| 2 Fixed Sashes and 2
Opening Top sashes | 5 pt
Locking System | Stainless
Steel Handles |



**2 PANEL, 5 PANE STAINED
GLASS DOOR**

PROJECT: Blue Stained
Glass Door

MATERIALS: Accoya |
Stained and Leaded Glass
| F&B 280 St. Giles Blue

FEATURES: Stained and
Leaded Glass | Raised and
Fielded Panels | Brass Ball
Bearing Hinges

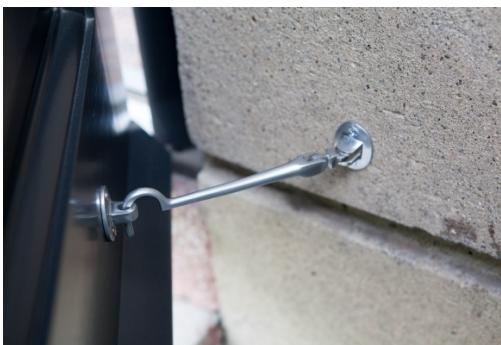


ARCHED FRONT ENTRANCE DOORS

PROJECT: Arched Doors,
Clontarf

MATERIALS: Accoya | RAL
7021 Black | RAL 9010
White | Clear Glass

FEATURES: Dual Colour
| Arched Doors | 57mm
Thick | Insulated Raised
and Fielded Panels |
Stainless Steel Ball Bearing
Hinges | Satin Chrome
Hook & Eye Catch



www.mcnallyjoinery.ie | 01-8433022 | info@mcnallyjoinery.ie



**DOOR, HALF HEIGHT
SCREEN & FANLIGHT**

PROJECT: Country House

MATERIALS: Iroko |
Double Glazing | Tea
Green Outside, RAL 9001
Cream to Screen & Inside

FEATURES: 4 Panel Door |
57mm Thick | Flush Mold
| Half Height Screen | Dual
Colour | Arched Fanlight
with Sunburst Detail



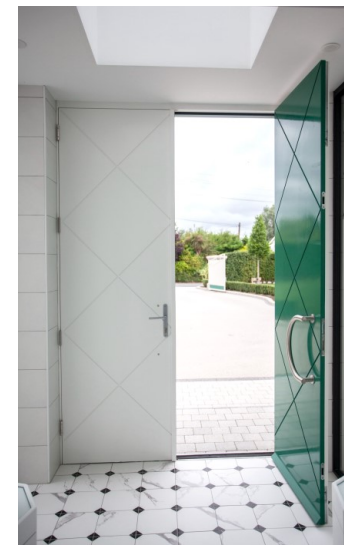
ENTRANCE DOOR & SCREEN

PROJECT: House of Joinery, Malahide

MATERIALS: Iroko | RAL 7045 Grey | RAL 9010 White | Clear Glass | Stainless Steel

FEATURES: Dual Colour | Arched Glass with Silver Spacer Bars | 57mm Thick | Insulated Flat Panels | Lambs Tongue Moulding | Stainless Steel BB Hinges

www.mcnallyjoinery.ie | 01-8433022 | info@mcnallyjoinery.ie



DOUBLE FRONT DOOR

PROJECT: Front Entrance Overhaul, Dundalk

MATERIALS: Iroko | Green RAL 6000 | White RAL 9003 | Chrome

FEATURES: Dual Colour | External Grade Flush Door | CNC Line Detail | Satin Chrome Handles & Flush Bolts | Internal Lever Handle



ENTRANCE DOOR

PROJECT: House of Joinery, North Dublin

MATERIALS: Accoya | F&B
18 French Grey | RAL 9010
White | Glass

FEATURES: Dual Colour |
57mm Thick | Insulated
Raised and Fielded Panels
| Brass Exitex Threshold |
Lambs Tongue Moulding |
Brass Ball Bearing Hinges



COTTAGE HALF DOOR & SIDE WINDOW

PROJECT: Joinery for Holiday Cottages, Bettystown

MATERIALS: Iroko | Bondex | Clear Glass | Brass

FEATURES: Half Door | Sheeting | 57mm Thick | Brass Ball Bearing Hinges



COTTAGE DOORS

PROJECT: Joinery for
Holiday Cottages,
Bettystown

MATERIALS: Iroko |
Bondex | Clear Glass |
Brass

FEATURES: Half Door with
Sheeting | French Doors
with Side Window | 57mm
Thick | Brass Ball Bearing
Hinges

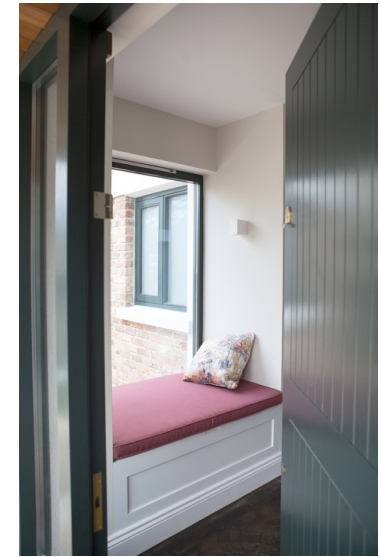


FRONT ENTRANCE DOOR

PROJECT: House of
Joinery, Enniskerry

MATERIALS: Iroko | Cream
RAL 9001 | Red Dulux
Monarch | Brass Ball
Bearing Hinges

FEATURES: Dual Colour |
Raised and Fielded Panels
| Fused on Glazing Bars
| Mila Automatic Multi
Point Lock



FRONT ENTRANCE DOOR AND SCREEN

PROJECT: House of Joinery, South Dublin

MATERIALS: Iroko | F&B 93 Studio Green | Clear Glass

FEATURES: Dual Colour | TG&V Sheeting | 57mm Thick | Brass Ball Bearing Hinges | Brass Union Nightlatch and Chubb Dead Lock | Brass Exitex Threshold

www.mcnallyjoinery.ie | 01-8433022 | info@mcnallyjoinery.ie



FRONT ENTRANCE DOOR

PROJECT: House of Joinery, North Dublin

MATERIALS: Iroko Teak | Sandblasted Glass | Stainless Steel

FEATURES: 4 Panel Imitation Double Door | Double Side Screen | Arched Fanlight | Flat Panel Bollection Mold | Leaded Sandblasted Glass



FRONT ENTRANCE DOOR

PROJECT: House of Joinery, North Dublin

MATERIALS: Iroko Teak | Sandblasted Glass | Stainless Steel

FEATURES: 4 Panel Imitation Double Door | Double Side Screen | Arched Fanlight | Flat Panel Bollection Mold | Leaded Sandblasted Glass



FRONT ENTRANCE GATE

PROJECT: Double gates

MATERIALS: Iroko |
Tricoya | F&B 243
Charleston Gray | Satin
Chrome

FEATURES: 44mm thick
double gates with splayed
panel design



FRONT ENTRANCE DOOR

PROJECT: Stained glass front entrance door and fanlight

MATERIALS: Accoya | RAL 9010 | Stainless steel ball bearing hinges

FEATURES: Stained and Leaded Glass



PORCH DOOR

PROJECT: Porch door

MATERIALS: Iroko | RAL
7030 Stone Grey |
F&B239 Wimborne White
| Brass handles & hinges

FEATURES: Dual Colour



**2 PANEL, 5 PANE STAINED
GLASS DOOR**

PROJECT: Blue Stained
Glass Door

MATERIALS: Accoya |
Stained and Leaded Glass
| F&B 280 St. Giles Blue

FEATURES: Stained and
Leaded Glass | Raised and
Fielded Panels | Brass Ball
Bearing Hinges





SIDE ENTRANCE GATE

PROJECT: House of Joinery, Dalkey

MATERIALS: Iroko | Accoya | RAL 7042 Grey | Brass

FEATURES: Iroko frame with Accoya TG&V sheeting



GARAGE GATES

PROJECT: House of Joinery, Dalkey

MATERIALS: Iroko | Accoya | RAL 7042 Grey | RAL 9010 White | Brass

FEATURES: Iroko frame with Accoya TG&V sheeting

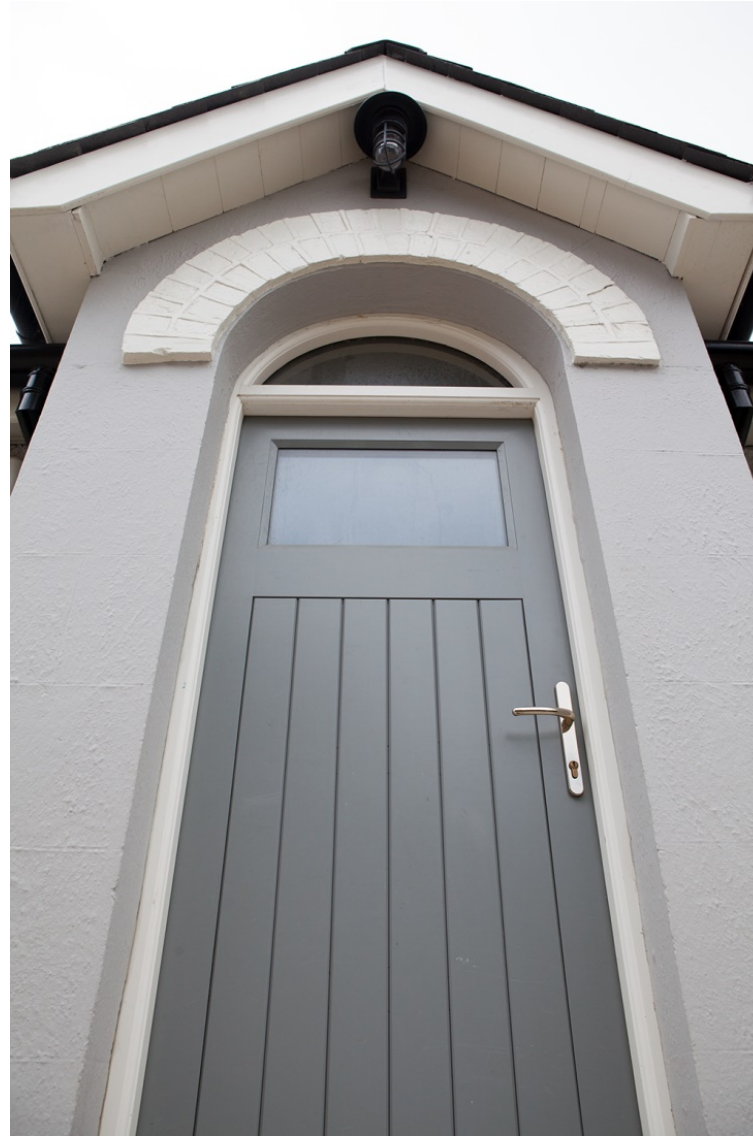


SIDE ENTRANCE DOOR

PROJECT: House of Joinery, Dalkey

MATERIALS: Iroko | RAL 9010 White | Bronze | Clear Glass

FEATURES: Iroko door and frame with Accoya TG&V sheeting

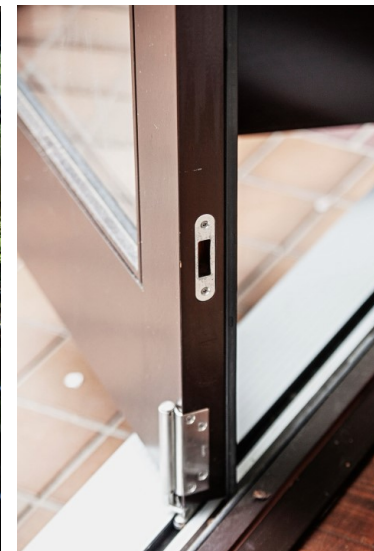


GATEHOUSE DOOR

PROJECT: House of Joinery, Dalkey

MATERIALS: Iroko | RAL 7042 Grey | Brass | Clear Glass

FEATURES: Iroko door and frame with Accoya TG&V sheeting and arched fanlight



BI-FOLD AND SIDE DOORS

PROJECT: House of Joinery, Shankill

MATERIALS: Iroko | Teknos Teak Stain | Teknos Rosewood Top-Coat

FEATURES: Bi-fold Doors | Bi-fold Windows | Screens | All to Customer Design and Spec



FRONT ENTRANCE DOOR

PROJECT: Front Door,
North Dublin

MATERIALS: Accoya | F&B
Vardo | McNally Cream |
Stainless steel | Satin
chrome | Satin obscure
glass

FEATURES: Dual Colour |
Mila Automatic 5 pt lock



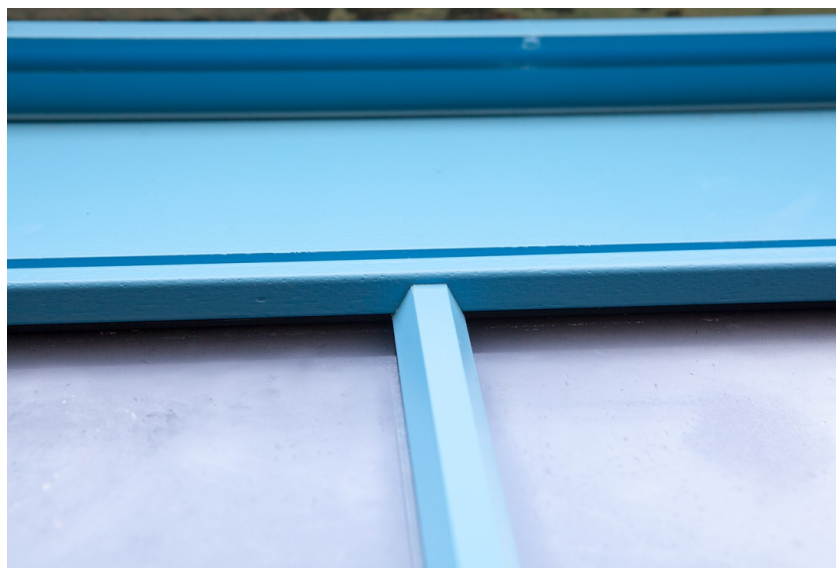
FRONT ENTRANCE DOOR

PROJECT: House of Joinery, Donabate

MATERIALS: Iroko | RAL 9010 White | RAL 3003 Red | Brass | Clear glass

FEATURES: Panelled door with decorative screen, arched fanlight, fused on glazing bars and fluted columns





GARAGE DOORS

PROJECT: Blue doors,
North Dublin

MATERIALS: Iroko | F&B
280 St. Giles | Stainless
Steel | Satin Chrome |
Clear Glass

FEATURES: TG&V Sheeting
both sides



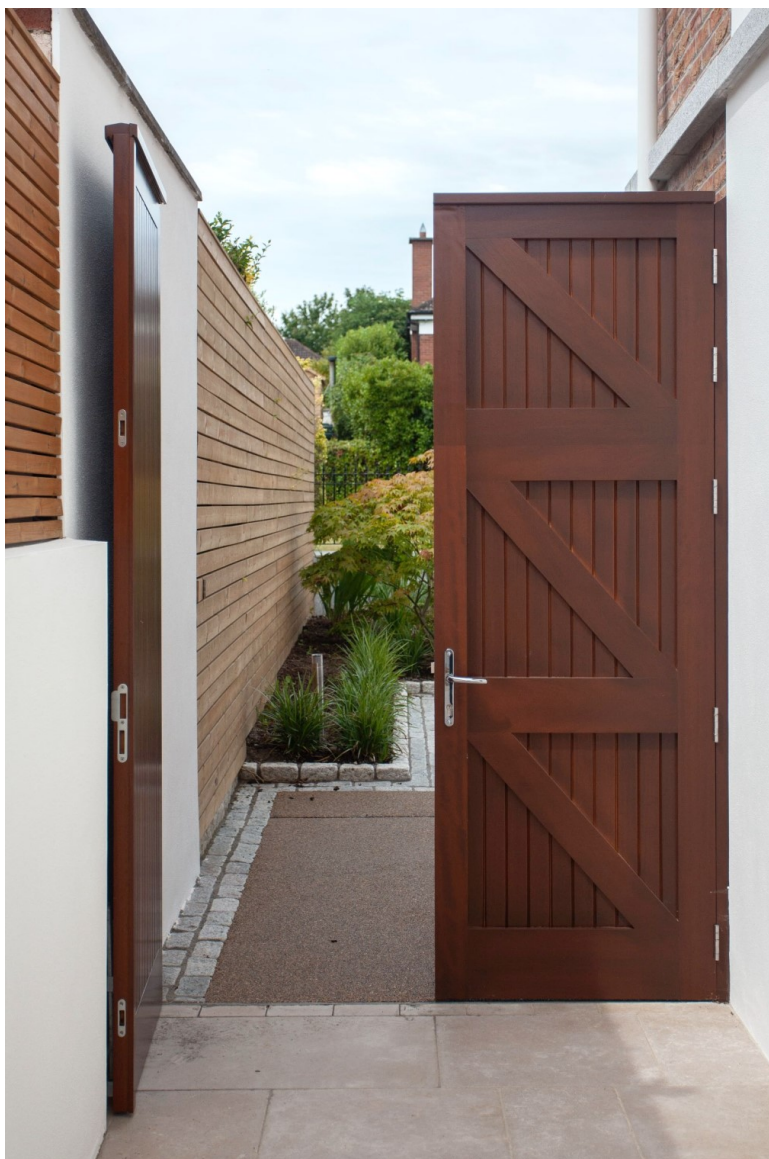
FRONT ENTRANCE DOORS

PROJECT: Blue doors,
North Dublin

MATERIALS: Iroko | F&B
280 St. Giles | Stainless
Steel | Satin Chrome |
Clear Glass

FEATURES: Double arched
doors with arched glass





DOUBLE & SINGLE SIDE GATES

PROJECT: House of Joinery, Castleknock

MATERIALS: Iroko | Teknos Rosewood | Stainless Steel

FEATURES: Ball Bearing Hinges, Deadlock, Sash-Lock, Galvanised Cross-Bolt and Dead-Bolt



www.mcnallyjoinery.ie | 01-8433022 | info@mcnallyjoinery.ie

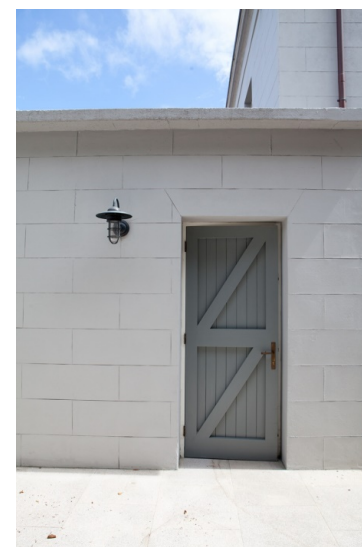


SLIDING GATE

PROJECT: Tree of Live

MATERIALS: Accoya |
Teknos Teak stain | Metal

FEATURES: Gate sheeted
with Accoya timber after
metalwork created by
others



COURTYARD DOOR

PROJECT: House of Joinery, Dalkey

MATERIALS: Iroko | RAL 7042 Grey | RAL 9010 White | Bronze

FEATURES: Iroko door and frame with Accoya TG&V sheeting and lats for support



FRONT ENTRANCE

PROJECT: House of Joinery, Dalkey

MATERIALS: Iroko | RAL 9010 White | Bronze | Leaded Glass

FEATURES: Imitation double door | Iroko door and frame with arched fanlight | Hand painted in situ



FRONT ENTRANCE DOOR

PROJECT: House of Joinery, Dalkey

MATERIALS: Iroko | RAL 7042 Grey | Brass | Bronze | Leaded Glass

FEATURES: Imitation double door | Iroko door and frame with arched fanlight | Hand painted in situ



BOATHOUSE DOORS

PROJECT: House of Joinery, Dalkey

MATERIALS: Iroko | RAL 7042 Grey | RAL 9010 White | Stainless Steel | Clear Glass

FEATURES: Iroko doors and frame with Accoya TG&V sheeting | French style doors and screen with fused on glazing bars

www.mcnallyjoinery.ie | 01-8433022 | info@mcnallyjoinery.ie



COURTYARD DOOR

PROJECT: House of Joinery, Dalkey

MATERIALS: Iroko | RAL 9010 White | Bronze | Clear Glass

FEATURES: Iroko door and frame with clear glass and fused on glazing bars



FRONT ENTRANCE DOORS

PROJECT: Arched double doors, Glasnevin

MATERIALS: Accoya | RAL 5013 Cobalt Blue | RAL 9010 White | Brass | White opal glass

FEATURES: Decorative flower detail to bottom panels | Dual colour with white to inside | Arched white opal glass



FRONT ENTRANCE DOORS

PROJECT: Traditional style double doors

MATERIALS: Iroko |
Teknos Teak stain | Clear
glass | Stainless steel

FEATURES: Unique style
double front entrance
door and screen





ARCHED FRONT ENTRANCE DOORS

PROJECT: Arched Doors,
Dollymount

MATERIALS: Accoya | RAL
9010 White | Silk Grey RAL
7044 | Clear Glass

FEATURES: Dual Colour
| Arched Doors | 57mm
Thick | Insulated Raised
and Fielded Panels | Black
Ball Bearing Hinges | Clear
Toughened Double-Glazing



FRONT ENTRANCE DOOR

PROJECT: Front door
under the archway

MATERIALS: Iroko | RAL
3003 Red | RAL 9016
White | Satin Chrome |
Clear glass

FEATURES: Dual colour |
Doctor's knocker and knob





FRONT ENTRANCE DOOR

PROJECT: Front door and screen, South Dublin

MATERIALS: Iroko | F&B
289 Inchyra Blue |
Polished Chrome | Clear
glass

FEATURES: Flat panel with
bollection moulding



FRONT ENTRANCE DOOR

PROJECT: Front door and screen, South Dublin

MATERIALS: Iroko | F&B
16 Downpipe | F&B 239
Wimborne White | Satin
Chrome | Obscure glass

FEATURES: Dual colour |
Flemish obscure leaded
glass



FRONT ENTRANCE DOOR

PROJECT: Front door and screen, South Dublin

MATERIALS: Iroko | F&B
16 Downpipe | F&B 239
Wimborne White | Satin
Chrome | Obscure glass

FEATURES: Dual colour |
Flemish obscure leaded
glass



METAL DOORS

PROJECT: House of Joinery, Templeogue

MATERIALS: Accoya | RAL 9001 White | Burnt Orange | Pressed Metal | Brass | Stainless Steel

FEATURES: Metal door & metal side screen with routed detail | Dual Colour



METAL DOORS

PROJECT: House of Joinery, Templeogue

MATERIALS: Accoya | RAL 9001 White | Burnt Orange | Pressed Metal | Brass | Stainless Steel

FEATURES: Metal door with routed detail | Dual Colour



FRONT ENTRANCE DOOR

PROJECT: Stained glass front entrance door and garage door, Whitehall

MATERIALS: Iroko | RAL 9010 inside | F&B 277 Dimpse outside screen | F&B 214 Arsenic outside door | Brass ball bearing hinges

FEATURES: Clear Toughened Double - Glazing and Stained Glass



GARAGE DOORS

PROJECT: Stained glass front entrance door and garage door, Whitehall

MATERIALS: Iroko | F&B
214 Arsenic | Obscure Glass | Brass

FEATURES: Brass Heritage Multi Point Lock | Brass Ball Bearing Hinges | Obscure Toughened Double-Glazed Glass



FRONT GATE

PROJECT: House of Joinery, Terenure

MATERIALS: Iroko | Tricoya | F&B Railings 31 Grey

FEATURES: Sliding gate



FRONT ENTRANCE

PROJECT: Front porch and matching garage doors, Skerries

MATERIALS: Accoya | RAL 7015 | RAL 9003 | Satin Chrome | Clear glass

FEATURES: Dual colour | Wrap around porch



FRONT ENTRANCE

PROJECT: Front porch and matching garage doors, Skerries

MATERIALS: Accoya | RAL 7015 | RAL 9003 | Satin Chrome | Clear glass

FEATURES: Dual colour | Wrap around porch

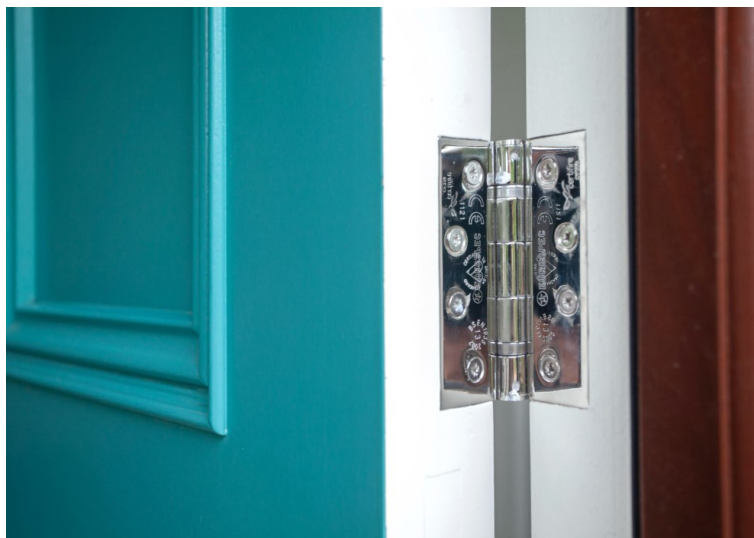


FRONT ENTRANCE

PROJECT: Front porch and matching garage doors, Skerries

MATERIALS: Accoya | RAL 7015 | RAL 9003 | Satin Chrome | Clear glass

FEATURES: Dual colour



FRONT ENTRANCE

PROJECT: Air BnB Full House of Joinery Project

MATERIALS: Iroko | F&B Vardo | McNally Cream | Stainless steel | Teknos Rosewood | Satin chrome | Satin obscure glass

FEATURES: Arched Door and Side Screens | Dual Colour | 5-Point Lock



REAR GARDEN DOOR

PROJECT: Rear Garden Door, Clontarf

MATERIALS: Iroko | F&B
239 Wimborne White |
Brass Ball Bearing Hinges

FEATURES: Aged Brass
Reeded Slimline Lever
Handles, Clear Toughened
Double-Glazed Glass

Fully CE Certified

AWARD WINNING IRISH JOINERY

Staircases | Windows | Doors | Bespoke Joinery



M McNALLY
J O I N E R Y L T D

W: www.mcnallyjoinery.ie
T: +353 1 8433022
E: info@mcnallyjoinery.ie

Visit our Showroom:
McNally Joinery Limited
Walshestown, Lusk, Co. Dublin